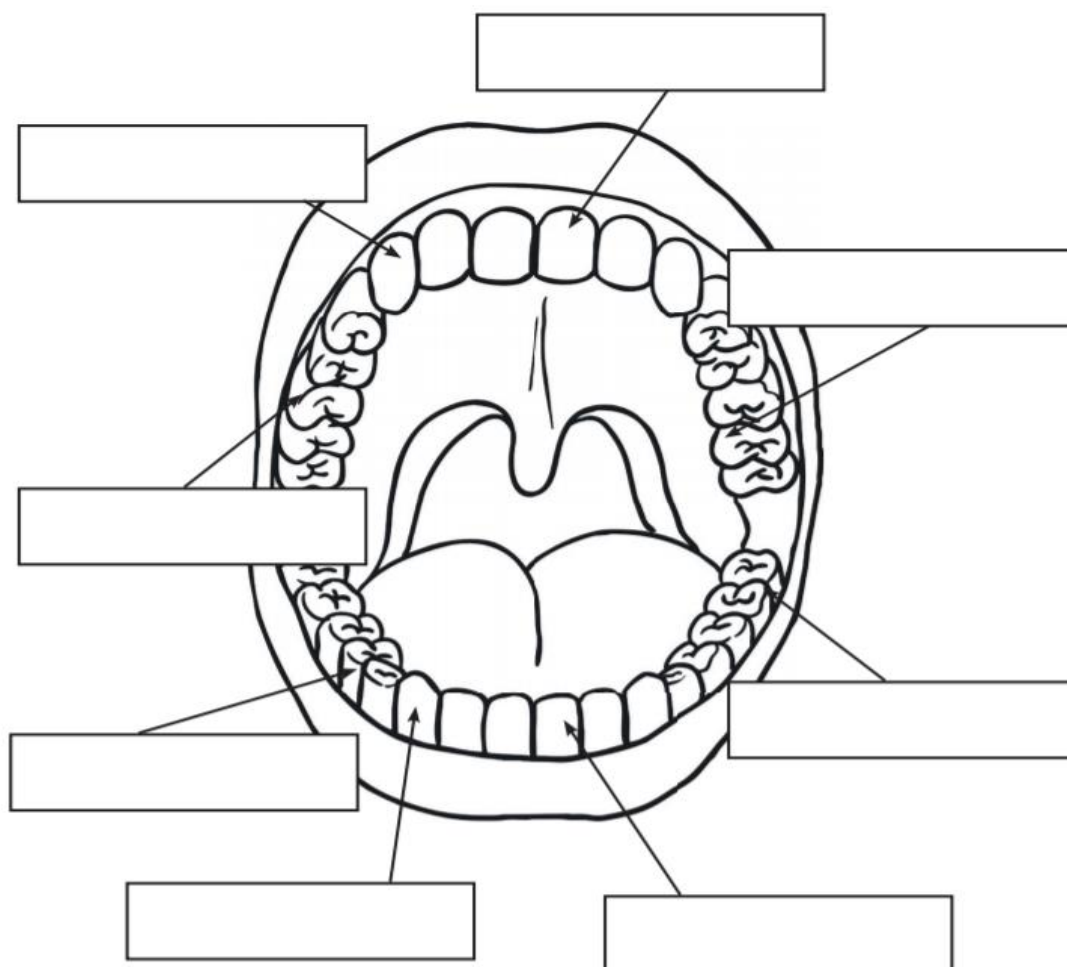


Science: Year 4 end of unit test – Animals including humans:

1. Correctly label the teeth below.

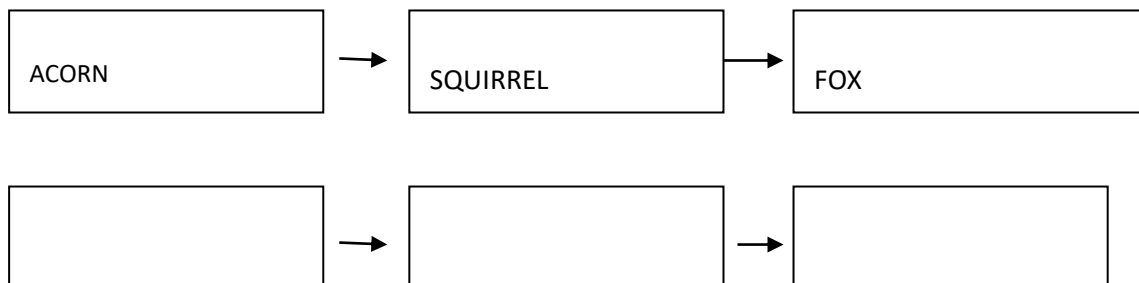
Molar
Pre molar
Incisor
Canine
Wisdom



2. Explain the main function of a wisdom tooth and why humans no longer need them.
3. I give the body the tools for growth. I can be found in milk, cheese and fish. Which food group am I?
4. Draw arrows to match the digestion function to the definition:

| | |
|-----------------|---|
| Rectum | Organ that cleans the blood. |
| Oesophagus | Any waste left is deposited through here. |
| Large intestine | A stretchy sack where food is broken down by acids and enzymes. |
| Mouth | Long flexible tube that food travels down to reach the stomach |
| Liver | All the food material that is still unwanted passes through here. It is here that any last water or minerals are absorbed into the blood. |
| Stomach | Place where teeth chew food ready for digestion. |
| Small intestine | A tube that breaks down food mixture so that the body can absorb all the vitamins, minerals, proteins, carbohydrates and fats. |

5. What is the difference between a predator and prey?
6. Draw an example of a food chain below. Include a producer, consumer and a predator. Here is an example to help you:



7. True or false: The small intestine is longer than the large intestine.

Challenge:

8. Tell the story of how a piece of bread travels through the digestion system, starting at the mouth and ending at the rectum.

